



MODEL MPX

measurement processor

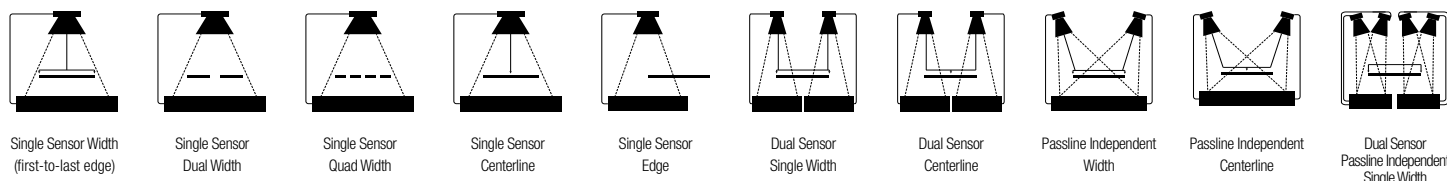
OVERVIEW

The SCAN-A-LINE™ Model MPX is the next generation of versatile Measurement Processors from Harris Instrument Corporation. The MPX Models 1&2 can be configured from any computer via a Setup Utility. The MPX Models 3&4 can be configured with the resident computer and custom program . The Model MPX 4.0 uses a SVGA Touch Screen User Interface. The Custom Program operates with all SCAN-A-LINE™ 10X-Series measurement sensors. All sensor configurations are supported.

The Model MPX eliminates the need for changing measurement interface boards, hardware jumpers, internal cables and connectors, or other hardware. This simplifies application specific configurations. Facilities with multiple SCAN-A-LINE™ measurement systems can stock fewer spare parts.



CONFIGURATIONS



FEATURE LEVELS

1.0 Serial output of web edge position data (raw counts), calibration can be performed via PLC, configuration via Setup Wizard on any standard Windows PC.

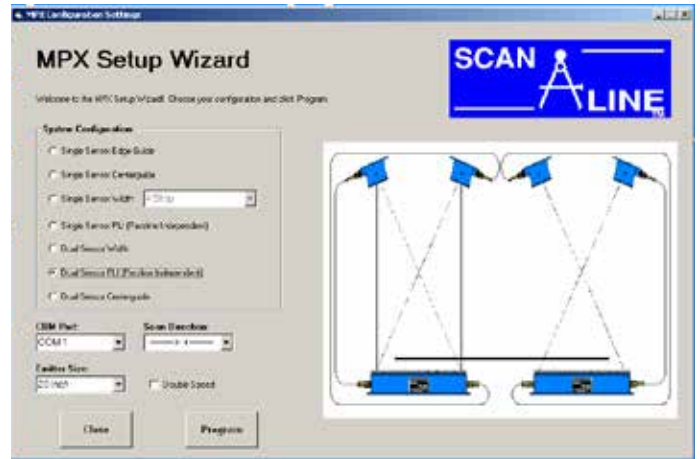
2.0 Serial output of raw counts, **analog outputs**, calibration can be performed via PLC, configuration via Setup Wizard on any standard Windows PC.

3.0 Serial output of raw counts, **analog outputs**, calibration can be performed via PLC, configuration via Setup Wizard on **integrated PC hardware**. **GUI interface for on screen graphing of up to four simultaneous width parameters, data collection by internal clock or tachometer input, high and low operating limits for up to four data channels, data logging and statistical coil reporting, integrated network connectivity, onboard sensor diagnostics and LED balanacing.**

4.0 Serial output of raw counts, **analog outputs**, calibration can be performed via PLC, configuration via Setup Wizard on **integrated PC hardware**. **On screen graphing, data collection by internal clock or tachometer input, high and low operating limits, data logging and statistical coil reporting, integrated network connectivity, onboard sensor diagnostics and LED balanacing. Standard SVGA touchscreen interface via Integrated PC hardware.**

GUI SETUP WIZARD

Compatible with standard 10XAS-series and 10XBR-series Passline Independent sensors. One or two sensors per processor unit. Sensor configuration is fully software selectable. Compatible with MPX units of all feature levels. Runs on any Windows-based PC.

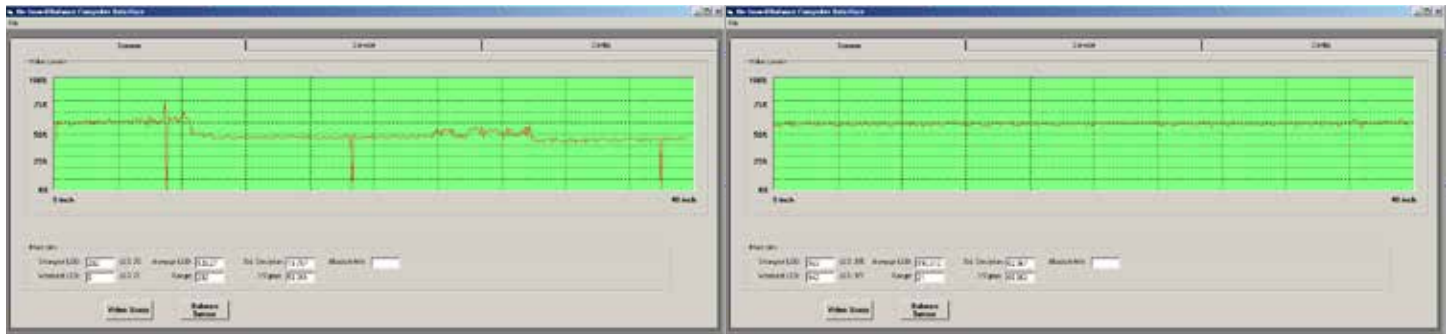


GUI OPERATOR INTERFACE*

On screen graphing of up to four discrete, simultaneous width parameters, imperial or metric units, high and low operating limits on each measurement channel, data logging and statistical reporting via "Strip Chart" graphing routines, full screen mode for distant viewing of a single measurement channel.



Integrated Sensor Diagnostics utility for monitoring status of emitter LED arrays, and automated balancing.



*available with feature levels 3 & 4 only

for more information, contact:



155 Johnson Drive, Delaware, Ohio 43015 | 740-369-3580 | info@harris-instrument.com